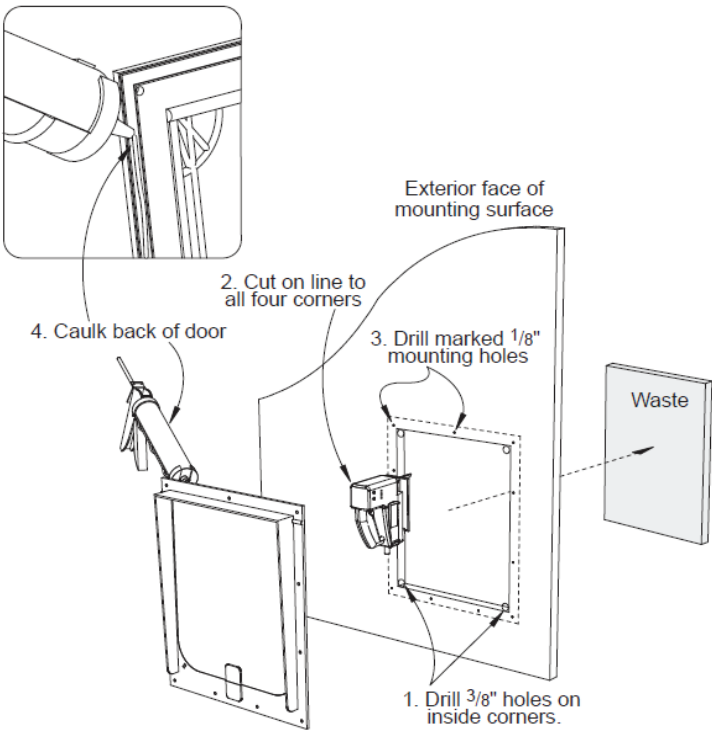


**Step 4:**

- Drill four, 3/8" holes on the **INSIDE** of each corner of the cut out area. (Fig 2.1)
- Using a jig saw, cut on the line to all four corners. (Fig 2.2)
- Using a 1/8" bit, drill 3/4" deep pilot holes at each location marked from the template (Fig 2.3) **CAUTION:** These are only pilot holes. Do not drill completely through the mounting area.
- Test fit the door to the opening by loosely installing a screw in each corner.
- **The RAIN HOOD should face towards the exterior to give maximum weather protection.**
- Verify that the hinged door panel swings freely through the cut out area. Any rubbing or interference between the hinged door panel and the frame will be adjusted for in Step 5.

**Step 5:**

- Remove the four corner screws from the test fit and remove the Magnador™ pet door from the mounting surface.
- Apply a small bead of caulk between the raised guidelines on the back surface of the door. (Fig 2.4)
- Re-install the Magnador™ loosely installing the four corner screws and gently press against the mounting surface to compress the caulk and provide a weather tight seal. (Fig 3.1)
- Loosely install the remaining mounting screws but do not tighten.
- Check for a free and unobstructed swing of the hinged panel.
- If rubbing occurs between the frame and panel, gently push the frame in a direction to eliminate the rubbing and tighten the mounting screws. (Fig 3.2)
- Tighten the remaining screws **EVENLY** to provide firm pressure on the caulk. (Fig 3.3)



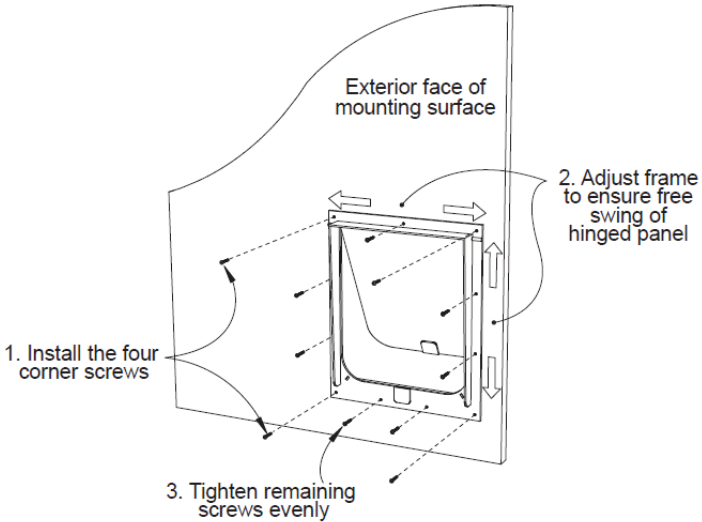
**FIG. 2**

**Step 6:**

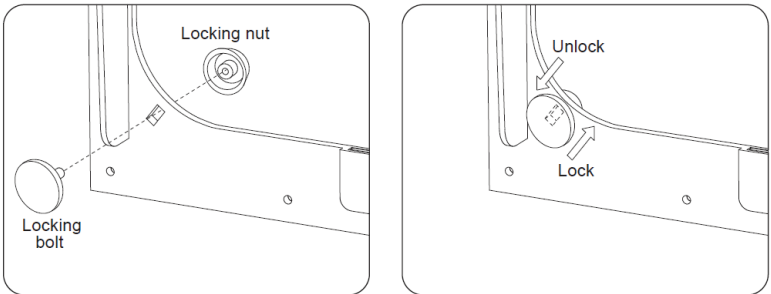
- The magnetic 'holding' power between the frame and the hinged door panel can be increased or decreased by adjusting the distance between the magnets.
- To adjust the distance between the magnets, loosen the screws at the bottom of the door frame and while applying upward (increase) or downward (decrease) pressure to the door frame, retighten the screws.
- After adjusting the magnetic 'holding' power, verify that the hinged door panel swings freely.

**Step 7:**

- Insert the black locking bolts through the rectangular slots in the bottom corners of the Magnador™ frame. (Fig 4)
- Bolts can be inserted from either the front or the back.
- Hold the bolts in place and screw the nuts onto the bolts.
- For free swinging door operation, slide the locking bolts to the lower position in the slot and tighten the nuts.
- To lock the swinging door in place, slide the locking bolts to the upper position in the slot and tighten the nuts.



**FIG. 3**



**FIG. 4**

**Lakeside Products Limited Warranty**

Lakeside Products warrants to the original purchaser this product to be free of defects in materials and workmanship for a period of one year from the date of purchase (proof of purchase required). Specific exclusions from this warranty include damage caused by accident, improper installation or abuse, including damage caused by pets. Lakeside Product's maximum liability on any claim shall be no greater than the original purchase price of the product. Under no circumstances shall Lakeside Products be responsible for consequential damage resulting from the use or miss-use of this product. For warranty claims, please return defective product or part, including **PROOF of PURCHASE DATE**, freight prepaid, to Lakeside Products for repair or replacement. Purchaser is responsible for return shipping and handling charges. This warranty is the only warranty made by Lakeside Products and replaces any and all previous warranties. See Lakeside Products website for all current warranties, terms and conditions.